



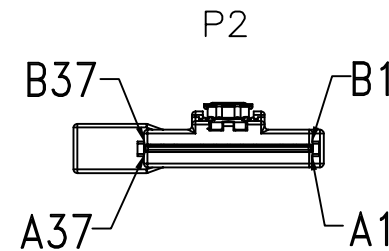
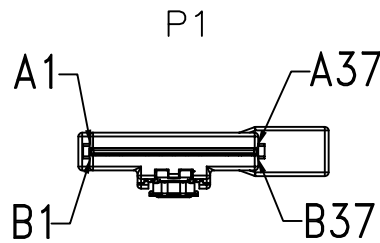
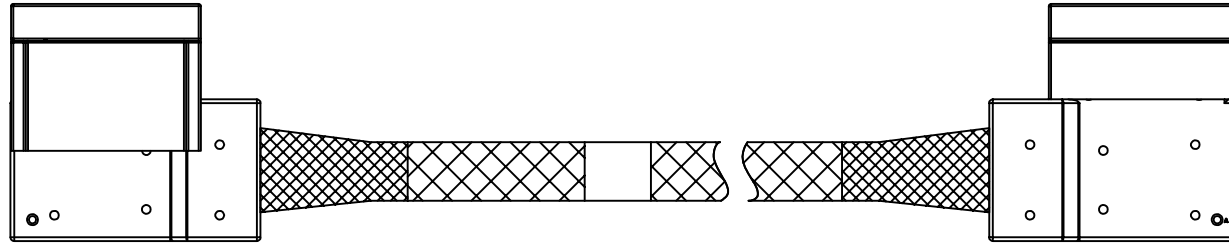
NOTES:

1. ALL CABLE 100% OPEN, SHORT, MISS WIRE & TRANSIENT FAULT TEST.
2. CONDUCTIVE RESISTANCE: 2Ω MAX.
3. INSULATION RESISTANCE: 10M Ω MIN WITH 200Vac AT 10ms.
4. HIGH FREQUENCY TEST MUST COMPLY WITH SAS 4.0 REQUIREMENT.
CONNECTOR IMPEDANCE: 85Ω ±15Ω
CABLE IMPEDANCE: 85Ω ±10Ω
5. ALL MATERIAL AND PROCESS MUST MEET THE REQUIREMENT OF RoHS2.0
6. PRODUCT SPEC. REFER TO PS-728XX-02XXX-XXX
7. PDR NUMBER:

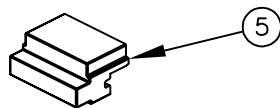
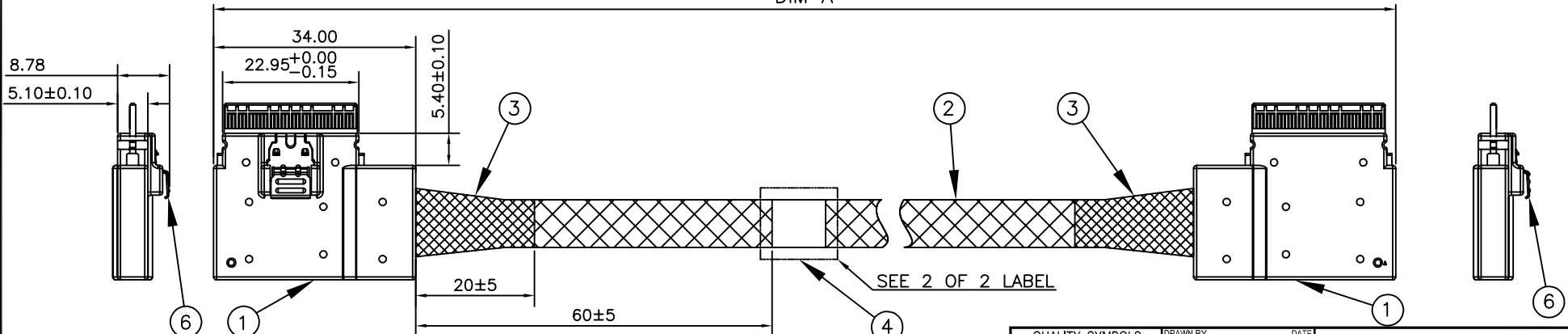
85Ω 30AWG:APD1090287

8. PART NUMBER:

728XX - XX XXX - XXX
 SERIES CODE CUSTOMER CODE
 18:8i LSE/LSE 85Ω 001:ACES
 PORT NUMBER SERIAL NUMBER
 02:2PORT 001



DIM A



ITEM	DESCRIPTION	Q'TY	UNIT
	SLIMLINE 8i LEFT SIDE 85Ω & SLIMLINE 8i LEFT SIDE OUT 85Ω	2	PCS
1	SLIMLINE 8i LEFT SIDE 85Ω	2	PCS
2	EXPANDO TUBE.	A/R	MM
3	ACETATE TAPE COLOR: BLACK.	A/R	MM
4	LABEL.	A/R	MM
5	DUST COVER, PE, COLOR: WHITE.	2	PCS
6	LATCH.	2	PCS

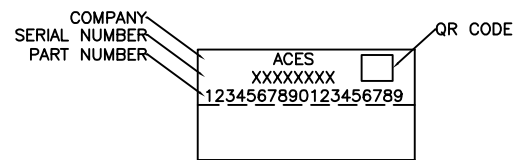
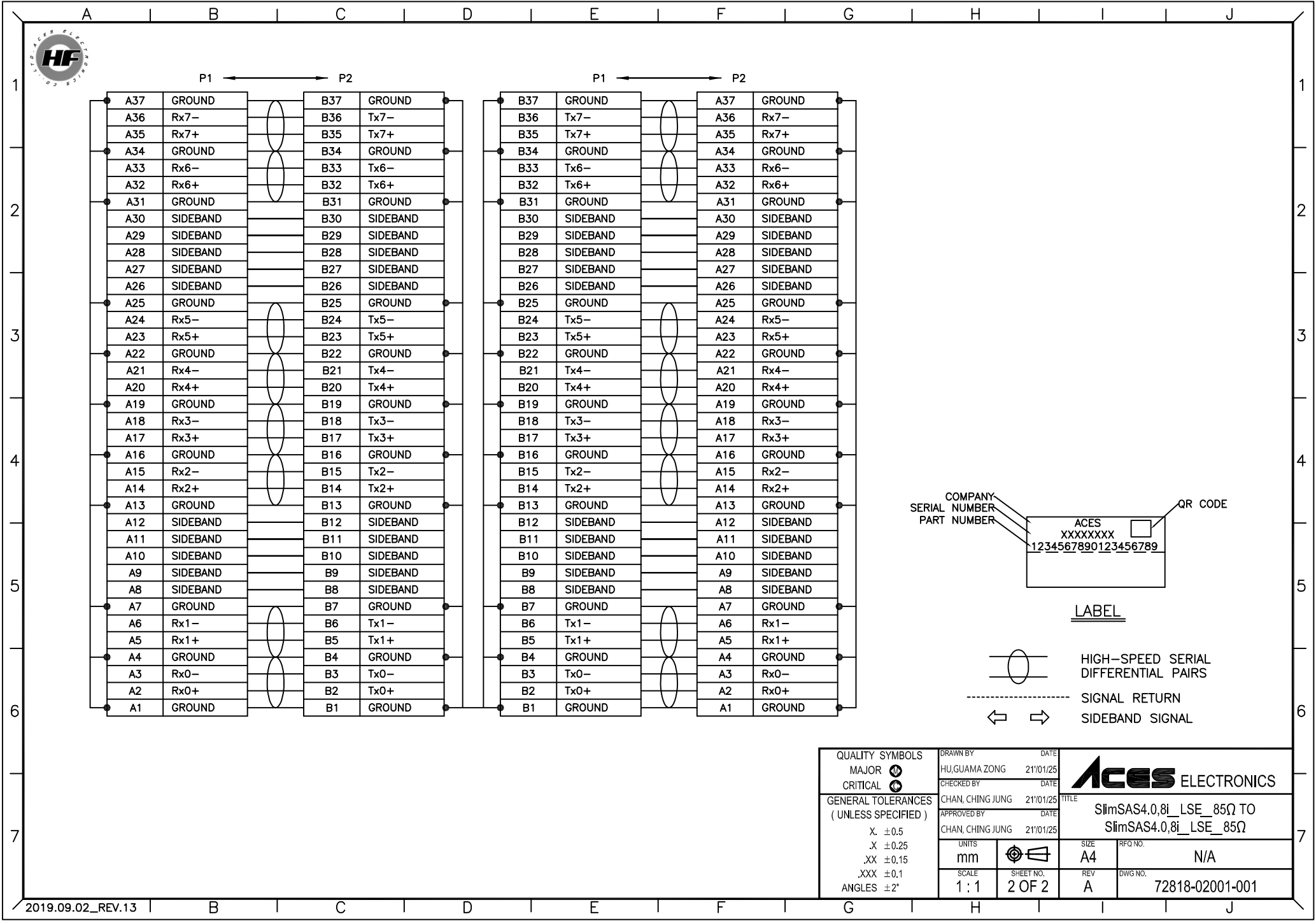
72818-02001-001	PART NUMBER
1000±15	DIM A

QUALITY SYMBOLS	DRAWN BY	DATE
MAJOR Ⓢ	HU, GUAMA ZONG	21/01/25
CRITICAL Ⓢ	CHECKED BY	DATE
GENERAL TOLERANCES (UNLESS SPECIFIED)	CHAN, CHING JUNG	21/01/25
X. ±0.5	APPROVED BY	DATE
.X ±0.25	CHAN, CHING JUNG	21/01/25
.XX ±0.15	UNITS	SIZE
.XXX ±0.1	mm	A4
ANGLES ±2°	SHEET NO.	REV
	1 OF 2	A
	SCALE	DWG NO.
	1:1	72818-02001-001

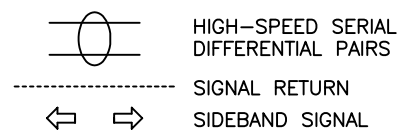
ACES ELECTRONICS

TITLE: SlimSAS4.0,8i_LSE_85Ω TO SlimSAS4.0,8i_LSE_85Ω

RFQ NO.: N/A



LABEL



QUALITY SYMBOLS MAJOR Ⓢ CRITICAL Ⓢ	DRAWN BY HJ, GUAMA ZONG	DATE 21/01/25	
	CHECKED BY CHAN, CHING JUNG	DATE 21/01/25	
GENERAL TOLERANCES (UNLESS SPECIFIED) X. ±0.5 .X ±0.25 .XX ±0.15 .XXX ±0.1 ANGLES ±2°	APPROVED BY CHAN, CHING JUNG	DATE 21/01/25	TITLE SlimSAS4.0, 8i_LSE_85Ω TO SlimSAS4.0, 8i_LSE_85Ω
	UNITS mm		SIZE A4
SCALE 1 : 1	SHEET NO. 2 OF 2	REV A	DWG NO. 72818-02001-001